

veltia®

New Generation Hand Dryers

STRAIGHT GRAB BAR

CODE 15047.S

Double fixed straight grab bar. Left position

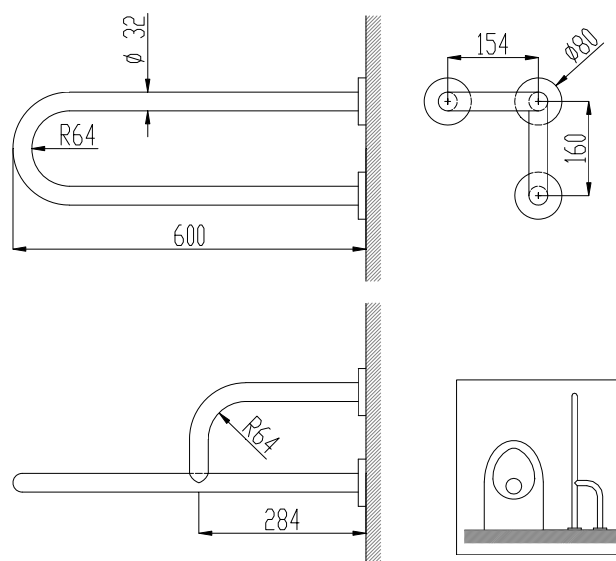
- Double fixed straight grab bar with three anchor points.
 - Support suitable for bathrooms, wc-bidet, showers and baths.
 - Designed for adapted toilets for disabled.
- Stainless steel satin finish. Also available white Nylon coated (VELTIA 155047.W) and polish finish (VELTIA 15047.B). LLeft position.



TECHNICAL DATA

- Made of AISI 304 stainless steel.
- Length: 600 mm.
- Bars: Ø 32 mm.
- Recommended installation height: 70-75 cm to floor.
- Fixing materials included.
- Maintenance: Stainless steel needs maintenance because dust can eventually damage the chrome in stainless steel. We recommend monthly cleaning with our special product.

TECHNICAL DRAWING



Dimensions in mm

SUGGESTED TEXT FOR PRESCRIPTION

Double fixed straight grab bar VELTIA or similar, with three anchor points. Made of AISI 304 stainless steel. Length: 600 mm. Bars: Ø 32 mm.



Related Products

